

INTRANSIT

The magazine for secure parking areas and transport companies, No. 17 March 2021



ESPOrg

European Secure Parking Organisation

ESPOrg Webinar and Workshops 2021

ESPOrg is committed to sharing knowledge and know-how 03

ESPOrg works with several associated members

Bosch - CAME - BETAFENCE 04-05-06-07

New Connecting Europe Facility programme approved

The Council and the European Parliament reached a provisional agreement 08

Workshop

Parking Areas Meeting COVID-19 09

ESPOrg

General Assembly Meeting - News - Members 10

WELCOME

INTRANSIT
The magazine for secure parking
areas and transport companies,
No. 17 March 2021



Dear Members and Friends of ESPORG,

They say that time flies when you're busy. Indeed, the first quarter of 2021 has flown by and ESPORG has been quite busy! In addition to the growing number of members, we continue to certifying parking areas and supporting CEF projects that are building certified secure parking areas as well as establishing new partnerships with various stakeholders within the logistics industry.

In this edition, we want to put some of the activities in the spotlight that have been going on this year within ESPORG as well as show the bigger picture of the logistics industry: highlights from the Expert Group as well as the ESPORG General Assembly meeting and expectations regarding upcoming funding for safe and secure parking areas.

We want to continue to encouraging all parking operators to certify their safe and secure parking areas through the EU-Parking Standard. More and more logistics companies want to ensure the safety of their drivers and load security by only using certified truck parking areas. Certification is a vital key to safe and secure parking and ESPORG is happy to help facilitating the certification process.

As we also see in this edition, ESPORG is committed to sharing and growing its knowledge regarding everything surrounding safe and secure parking. We will be hosting several upcoming webinars and workshops this year for our members and others in our network. All the upcoming topics can be found within this month's edition. Should you have any questions or concerns, please let us know.

Finally, we would like to welcome two new members this month: Sociedad Promotora de la Zona Aduanera de Irun S.A. ZAISA in Spain and Workflow & Design Beyers Group BVBA in Belgium! We look forward to promoting safe and secure parking areas together with you!

Best wishes,

Dirk Penasse

ESPORG WEBINAR AND WORKSHOPS 2021

ESPORG is committed to sharing knowledge and know-how regarding safe and secure parking with all of its network in order to improve conditions within the logistics industry. To do this, we are organizing several workshops webinars this year. You can find the full list of topics below:

EU-PARKING STANDARD:

Understanding the Standard as well as the technical and service specifications involved and the requirements for certification

ITS

Intelligent Transport Systems—how to integrate this within parking areas, how to connect to national systems and create a continuous, free-flowing system of information all over Europe

CONNECTING PORTS-RAILWAYS-PARKING AREAS

ESPORG is lucky to have members in all walks of the logistics industry. We want to connect our various members and explain the

ARCHITECTURAL DESIGN & PLANNING

You want to build a parking area? That's great! Now what?

This workshop will focus on the architectural design and plan for parking areas—the various steps and issues to be sure to consider when planning a parking area.

BUSINESS PLAN

Writing the business plan from a financial perspective and gaining inspiration from various business plan ideas from current successful members.

APPLYING FOR FUNDING

Building a safe and secure parking area is not cheap—ESPORG wants to help its members navigate the various channels to receive funding for their SSTPAs. This workshop will focus on the process of writing successful applications and applying for funding.

CEF FUNDING

Connecting Europe Facility (CEF) funding has been instrumental in making the logistics industry safer and more secure. ESPORG has been quite successful in its past applications for CEF funding for its members and we want to share our knowledge with you.

UNDERSTANDING AND IMPLEMENTING NEW LEGISLATION

Legislation is continuously changing in order to accommodate the ever-evolving logistics industry. ESPORG would like to keep you informed of this new legislation and how it affects your daily business and parking areas.

MARKETING

Promotion is a key part of a successful company and of a successful parking area. ESPORG would like to help its members with marketing from various perspectives, including but not limited to transport companies and suppliers.

MONITORING & SURVEILLANCE

ESPORG has some key players in CCTV and other monitoring and surveillance equipment within its member roster. This workshop will aim to inform participants about the latest technology available as well as the options for parking areas, including within the framework of the Standard and legislation.

We look forward to your participation this year!

Interested?

Or want to suggest another topic?

✉ E-mail christy.ha@esporg.eu.

ESPORG WORKS WITH SEVERAL ASSOCIATED MEMBERS TO PROVIDE ITS MEMBERS WITH THE LATEST TECHNOLOGY AND SERVICES WITHIN THE LOGISTICS INDUSTRY.



Bosch supports on building up technologically advanced truck stops in Europe

Bosch provides comprehensive solutions for truck parking operators: starting from consulting and concept development up to the implementation of turn-key access control, video and on-site as well as online payment solutions. At the very core, the Bosch booking portal connects every means of physical infrastructure and connects it with the digital world.

Digital first: online booking portal

A special focus of Bosch is on digitally connected services. In the core is the online booking portal, Bosch Secure Truck Parking. The digital platform allows trucking companies and drivers themselves to reserve parking spaces online or by smartphone app in real-time. The truckers benefit from this, because knowing that their pre-booked parking lot will be available, reduces stress and enables more comfort. As an important comfort feature easing the bureaucratic aspect of parking, parking transactions are automatically documented and online invoiced. Moreover, the booking portal has open API for other channels that want to have access to the truck stop, e.g. fleet management software or navigation systems.

The booking platform also provides comprehensive information on infrastructure and facilities available at truck parking areas. The portal provides information on every parking area's security features, for example whether it is fenced in, has access control gates, or video surveillance. The platform lists available infrastructure, such as restrooms and shower facilities, hotels, restaurants, or truck-wash facilities.

Video monitoring and video analytics

With its own monitoring center, Bosch can also provide state of the art security operation services in line with the EU truck parking standard for security operations. Video Analytics is an

This month we would like to feature the partnership of three of those associated members:

BOSCH, CAME, and BETAFENCE.



Bosch as an ideal partner for EU-funded truck parking projects

European Commission takes action for more safe and secure truck parking areas

Every road user has witnessed overcrowded truck parking areas along motorways, where trucks are parked even on entry or exit ramps because regular truck parking spots are just not available anymore. This is very dangerous in terms of road safety and additionally makes searching for a free parking lot also highly stressful for the driver. Moreover, it is worrying for cargo owners as overcrowded parking areas are usually hot spots for theft.

As a direct action, the Commission has approved to fund new secure truck stops that will now be built across Europe at a total budget more than 40 million Euro. The total investment amounts are over 110 million Euro.

important enabler of any strategy to substantially improve levels of security, as well as offering clear business advantages beyond security. It acts as the center of a security system, using metadata to add sense and structure to captured video footage. The intelligent cameras can be linked to the Bosch monitoring center. If incidents are detected, an immediate alarm is forwarded to the Bosch monitoring center. The security agents in the center can then take immediate actions like audio intervention or direct activation of intervention partners or the police;

Collaboration with partners enables broader product range

The concept development, construction and operation of a truck stop is complex. As a key success factor, Bosch works together with regional construction companies and pan-European specialists. One of those partners is the well-known ESPORG member CAME. The Italian company provides modern and integrated solutions for vehicle and pedestrian access control systems. CAME solutions include: parking automation, turnstiles, barriers, ANPR cameras, gate automations and bollards.

Software is available both as an on-premise server solution and a cloud service. The solution ensures a full digital operation and integration into digital truck stop environment, and is connected to the Bosch online system.

CAME a state of the art concept for the Secure Truck Parking in Europe

Truck Park Operators are deeply involved in new challenges featured by long-term perspective inspired and influenced by the new digital-driven technologies, to make the customer experience safe and secure. Impressive investments have been launched and they require the integration with solid partners able to grant High Performance Equipment, Lowest Operational Costs, Maximize the Uptime. With this goal in mind in CAME has conceived a brand new Service Concept.

Based on the CAME Service Concept – Service at Zero Km, taking advantage of the Artificial Intelligence, our system alert when a preventive maintenance is needed and the procedure to follow - leads the not-skilled staff of the Truck

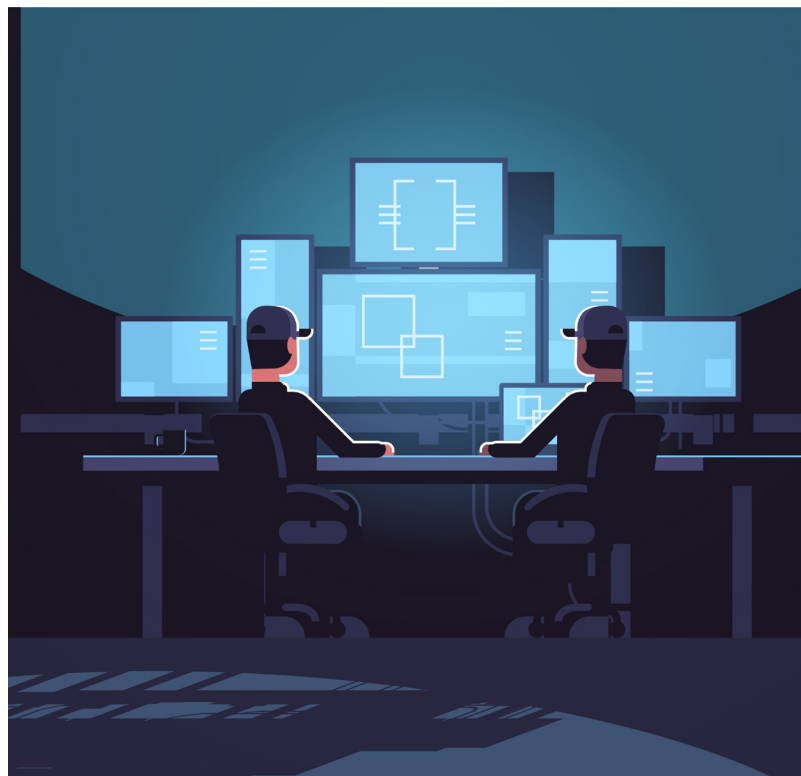
Park Operators to repair the damaged/broken parts by themselves, and the system itself makes a self-diagnostics to prove all is functioning correctly (fool-proof system) - the not-skilled staff of the Truck Park Operators can re-boot the system thanks to the self-synchro application.

As a consequence to this new CAME Concept the Truck Park Operators may benefit from no-waiting for the skilled-technicians of the manufacturer to travel on-site – time repair drastically reduced – no longer stress in case of a breakdown – from traditional preventive and corrective maintenance to Smart Maintenance – reduced costs in Service.

What best in a context where Business Continuity and Customer Experience are a must jointly to safe and security.

CAME

safety & comfort



For more information, please visit www.bosch-secure-truck-parking.com
Video case study: <https://www.bosch-secure-truck-parking.com/parking-lot-operators/#video>



Betafence: Creating a Safe and Secure Truck Parking Area

Drivers with valuable assets need heightened levels security when parking their shipments for extended periods. To ensure the safety of drivers and assets from theft attempts at commercial trucking parking areas, you need to create a dedicated, protected zone by implementing a Safe and Secure Truck Parking Area (SSTPA) security approach.

The perimeter security system needs to consist of a layered approach. It must discourage entry to unauthorized persons and detect entry or exit of the premises by non-authorized persons.

A safe external perimeter consists of:

- High quality mesh fencing
- A combination of gates, barriers and turnstiles
- Electronic components for access control, intrusion detection, identity control and registration
- Remote cameras
- Professional Lighting

Demarcation, Dissuasion, and Delay

The most direct way to ensure a safe external perimeter is the installation of fences, gates,

perimeter areas that require demarcation, dissuasion, and delay.

- **Demarcation:** Fences in the 'demarcation' category indicate a boundary. The fence is intended to indicate where the site starts or ends.
- **Dissuasion:** Fences in the 'dissuasion' category have a clear aim. They prevent the boundary from being crossed and form a physical obstacle, which clearly indicates that entry is reserved to authorized persons only.
- **Delay:** Fences in the 'delay' category hinder entry and for that reason are considered as 'security fencing'. The fences slow down the entrance of unauthorized persons and allow the security team to respond. The strength of your external perimeter will depend on the level of dissuasion, the delay that the physical barrier can cause, and the accuracy of the detection system.

Considerations when choosing the total system

The total system needs to deal with varying intrusion attempts, the fences need to be highly resistant, able to withstand pressure for vandalism or cutting, or climbing. The mesh aperture and height of the fence, the resistance of the welds and the steel wire diameter are all critical features that make it hard to climb or cut the fence. Razor barbed wire topping can provide an additional degree of security. The fencing material should also be able to withstand harsh and sometimes corrosive weather/environmental conditions.

An efficient fencing system needs to strike a balance between anti-climb and cut resistant, whilst also providing excellent visibility for a combination with CCTV systems. The tighter the mesh size is made, the more difficult it is to climb the fence, but also the more the visibility is hindered. The more visibility required, the lighter colour the fence material should be to form a better contrast with human shapes.

SSTPA's are essential to reduce the risk of cargo theft and choosing the right perimeter fencing is essential to creating a Safe and Secure Truck Parking Area.

Betafence offers one of the largest ranges of security fencing systems and gates in the market and have experts on hand to help you identify the most effective perimeter security solution for your truck parking area.

A We have taken your questions to
Kris Van Waes Product Manager, Betafence



What is Betafence's interest in truck parking areas?

One of the key values of Betafence is that we act and operate in a way that benefits our surrounding communities, upholding and respecting fundamental rights and engaging with local communities. We strongly believe that SSTPAs are a benefit for everybody.

How do you see the path forward for secure parking?

A strong partnership with key players who all have expertise in their specific domain creating safe external perimeters, combined with clear European and local rules, guidelines and regulations. European or private funding would definitely help to build awareness and willingness to invest in SSTPAs.

What is your contribution to making truck parking more secure in Europe?

As a global player in fencing solutions, with experience in different applications and sectors, where different security levels from low security to high security level are required, we would like to share our experience and know-how to provide secure truck parking areas that can cope with today's challenges.

In your view, what added value do fences have regarding security and safety?

In my view fences are the one of the most important parts in a total perimeter concept. Fences are the first boundary that need to be breached or crossed for people with bad intentions. Choosing the correct fencing solution will prevent a lot of problems.

How about product differentiation? To what extent can you adapt fencing solutions to security needs?

Depending on the requested security level and the local needs or requirements, we can propose solutions which delay forced entry from seconds to multiple minutes.

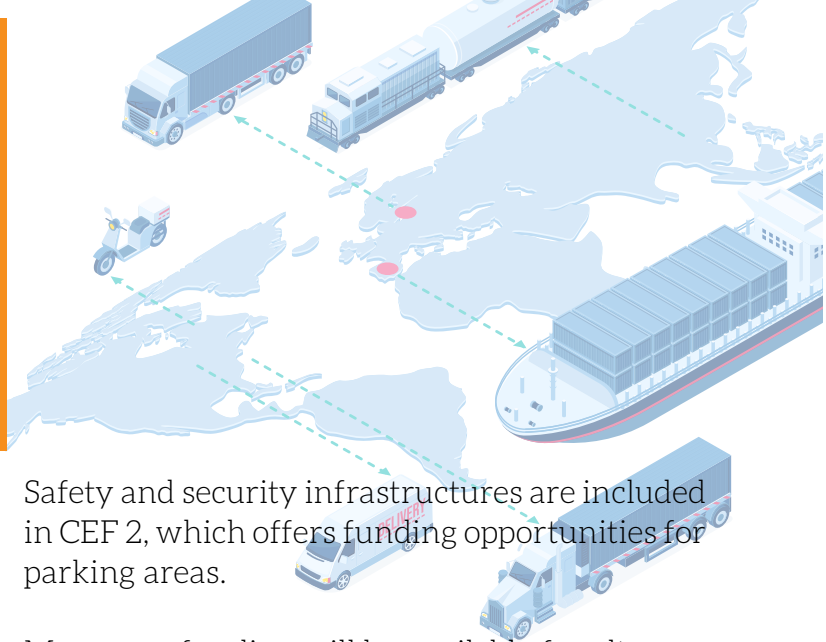


B BETAFENCE

a PRÆSIDIAD brand

With 140 years experience, Betafence is a world leader in perimeter solutions. With eight global manufacturing facilities our products are available in more than 100 countries worldwide. Betafence manufacture fencing systems of renowned quality to secure people, assets and businesses around the globe - supplying products you can trust and quality that lasts.

NEW CONNECTING EUROPE FACILITY PROGRAMME APPROVED



The Council and the European Parliament reached a provisional agreement on the second edition of the Connecting Europe Facility (CEF 2.0). The programme will dispose of over 33 billion € and fund projects across Europe from 2021 to 2027.

In the field of transport, over 25 billion € are foreseen, including 11.29 billion € for cohesion countries. A new aspect within CEF 2.0 is military mobility.

The idea of modernising rail, road, waterway and maritime infrastructure into a truly interconnected European infrastructure matches ESPORG's objective of creating an EU-wide network of parking areas.

Safety and security infrastructures are included in CEF 2, which offers funding opportunities for parking areas.

Moreover, funding will be available for alternative propulsion systems, for instance, which can also benefit ESPORG members.

The CEF programme is managed by the re-branded European Climate, Infrastructure and Environment Executive Agency (CINEA).

In the meantime check out which parking-related projects have been funded under CEF 1 and contact us if you would like further information.



The next call for proposals is expected in the second half of 2021. We will keep you posted.

ON MARCH 29, 2021, ESPORG AND UETR (THE EUROPEAN ROAD HAULERS ASSOCIATION) HOSTED A COLLABORATIVE WORKSHOP TO DISCUSS THE TOPIC OF "PARKING AREAS MEETING COVID-19 CHALLENGES FOR ROAD HAULERS".

UETR Secretary General Marco Digioia and ESPORG General Manager Dirk Penasse led the workshop and welcomed three speakers:

- Stuart Madden from C4T Calais
- Barry Lyons, UICR Special Advisor
- Desirée Paseiro from FENADISMER, Spain's Road Haulage Association

Madden discussed challenges from the parking operator and parking area point of view, namely challenges regarding COVID-19, security, operations, development, and funding.

Lyons discussed the role and needs of drivers, stressing their importance to the transport industry and society as a whole.

Paseiro discussed the reasons for more safe and secure parking areas and the current gap in Spain between the European recommendations for parking areas (one every 100 km) and the existing secure areas (current shortage of 115 parking areas).

All three presentations stressed the need to provide more safe and secure parking areas in order to accommodate the needs of drivers and the growing logistics industry.

Following the presentations, several discussion points were raised:

- The essential role of those in transport
- The need for parking areas to be considered essential
- The work that still needs to be done in order to provide drivers with basic needs
- The need for dynamic and static information
- The need for a common online European platform
- The variation in functionality regarding national access points (some exist but do not function—parking areas can't send data)
- essential role of those in transport
- The need more safe and secure parking areas
- The need for fluid communication across Member States
- A contingency plan for future crisis situations like the pandemic
- Future discussions regarding sustainable energy
- Options to increase the quality and conditions of drivers in order to make the profession more attractive



There will be a follow-up workshop at the end of April to continue discussing these topics. Is there a topic you think should be discussed?



E-mail christy.ha@esporg.eu.

Annual ESPORG General Assembly Meeting a Success

Like many of our events over the past year or so, the ESPORG General Assembly meeting was held virtually on March 17, 2021. The meeting was steered by Chairman Michael Nielsen from Copenhagen.

General Manager Dirk Penasse presented the current activities of ESPORG and several administrative issues were addressed.

Finally, ESPORG was pleased to have a portion of its meeting dedicated to presentations from the European Commission:

Jean-Louis Colson (Head of Road Transport Unit, DG MOVE, European Commission) discussed the Mobility Package I and the need to improve working conditions for drivers, to improve road safety, and the importance of safe and secure parking areas as well as for shippers.

Inès Maillart, also from DG MOVE, discussed the background, state of play and way forward regarding the EU-Parking Standard. She gave an update in context of Mobility Package I and explained that they are working on first draft of Delegated Act in order to make it legislation future-proof. She opened the floor for questions from members.

Thank you to all of our members who attended and we look forward to serving you this year in all things related to safe and secure parking !

Intransit is published by ESPORG, the European Secure Parking Organisation.
Responsible publisher:
Dirk Penasse (address at main office),

Main office:
Michel Scheperslaan 85,
3550 Zolder,
Belgium
Email: info@esporg.eu



EU office:
Avenue d Cortenbergh 52,
1000 Brussels,
Belgium

The European Commission's expert group on safe and secure parking areas for trucks held its second meeting this year on March 19, 2021.

The Commission is working on the finalization of the annex of the draft Delegated Act regarding the technical specifications. The next working group meeting will be focused on the certification process.

Dirk Penasse, the General Manager of ESPORG and member of the expert group, welcomes the progress: "I think we are staying true to the results of the EU study on truck parking, which was supported by the entire transport sector, and our work in the expert group so far. The efforts go in the right direction from the point of view of truck parking operators."

We will keep you updated about the progress on the Delegated Act, whose approval we expect in the second half of the year.

OUR MEMBERS



ESPOrg
European Secure Parking Organisation

The articles represent the view of the featured companies and not necessarily that of ESPORG